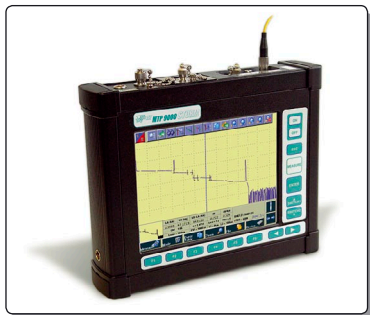


Mobile Testing Platform MTP 9000

MOBILE TESTING PLATFORM MTP 9000 BELONGS TO A NEW GENERATION OF MOBILE DEVICES AND IS DESIGNED TO SOLVE ALL MEASUREMENT TASKS WHEN INSTALLING OPTICAL FIBER COMMUNICATION LINKS.

MTP 9000 IS A UNIVERSAL MEASUREMENT DEVICE CONSISTING OF BASIC OPERATION MODULE WITH A BUILT-IN COLORED DISPLAY AND A WIDE RANGE OF REPLACEMENT MEASUREMENT MODULES.



Convenient design makes possible for the users to purchase various replacement modules when needed and conduct all types of optical cable measurements. Replacement modules are easy to install and replace. This makes it unnecessary to purchase any other new devices and cuts down time input and training expenses.

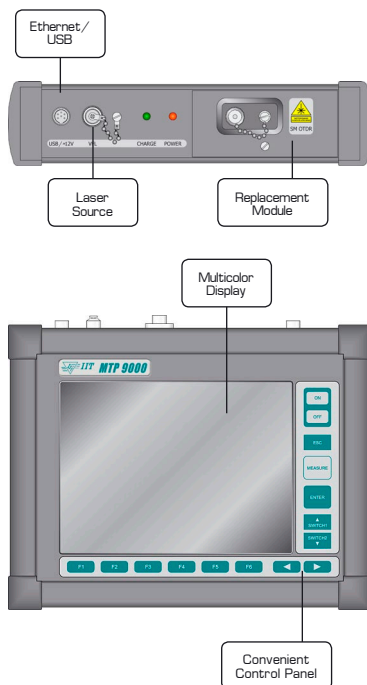
A multicolor display with a TOUCHSCREEN function is used in the platform, installation of an optical power meter (OPM) is provided for and a laser source for the detection of faults in optical fibers (OFL).

REPLACEMENT MODULES FOR THE TESTING PLATFORM MTP 9000

- optical reflectometer (OTDR)
 - units with standard and high dynamic range are produced
 - automation of the measurement process
 - dead zone when events are located is less than 3.5 meter
 - possibility to initiate measurements by pressing one button
- electric cables reflectometer (TDR)
- optical spectrograph (OSA)
- polar mode dispersion analyzer (PMD)
- chromatic dispersion analyzer (CD)

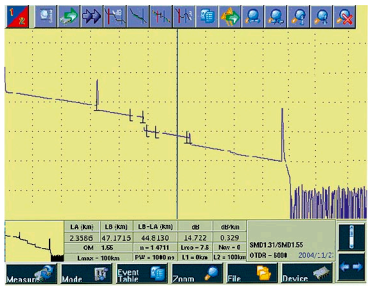
Service conditions

- ambient air temperature 0 ... +50°C
- relative air humidity no more than 90% at 25°C
- atmospheric pressure from 70 to 106.7 kPa



REPLACEMENT MEASUREMENT MODULE OF THE OPTICAL REFLECTOMETER CAN FUNCTION IN THE LASER SOURCE MODE.

PLATFORM ARRANGEMENT EQUIPPED WITH A POWER METER AND OPTICAL REFLECTOMETER MODULES REPRESENTS AN INDISPENSABLE DEVICE FOR INSTALLATION AND OPERATION OF OPTICAL FIBER COMMUNICATION LINKS.



ADVANTAGES

- software developed on the basis of OC LINUX which considerably increases device reliability
- device operation is done by means of user-friendly interface
- modern SYSTEM-ON-CHIP architecture is used which provides for the realization and integration of modern interfaces
- TOUCHSCREEN function
- possibility to supply the platform with an optical power meter
- possibility to supply the platform with a built-in laser source to detect faults in optical fibers
- built-in USB-port for communication with PC
- possibility of remote operation by means of a built-in ETHERNET-port
- bright multicolor display with high resolution
- compact, light, low power consumption
- strong hermetic case conforming to IP65 standard

Specifications

Optical Power Meter		
Wavelength, nm	850	1310, 1550
Power range, dBm	+3...-60	+3...-65
Uncertainty, dB	0.33	0.22
Linearity, dB	0.17	0.11

Built-in Laser Source	
Output power, mkW	> 500

Optical Reflectometer Replacement Module							
Wavelength, nm	850±20	1300±20	850±20 1300±20	1310±20	1550±20	1310±20 1550±20	
Dynamic range (SNR=1):	- standard, dB	30	29	28.3	36.5	35	36/34.5
	- high, dB	-	-	-	41.5	39.5	41/39
Attenuation/Fault location dead zone	14.5 / 3.5						

Platform General Parameters	
Power supply	battery (not less than 6 hours) / 12 / ~220V
Dimensions, mm	243 × 195 × 56
Weight: with battery, kg	2.5

MTP 9000 SAVES YOUR TIME INCREASING THE EFFECTIVENESS OF YOUR RESOURCES USE.