

## OFL-5 OPTICAL LOCATOR - REFLECTOMETER



The OFL-5 Optical Locator - Reflectometer is designed for measuring attenuation in optical fibers and their connections, length of an optical fiber and distance up to its any point.

Application: installation, maintenance and repair work on optical fiber links.

The device can be used both in the laboratory and field.

As a locator the OFL-5 automatically tests a distance to event or fault location of an optical fiber cable, measures loss and refractive index in the event. Measurement results are shown in symbols on the built-in display. The backscattered traces are automatically stored in the non-volatile memory of the given instrument and for a future download to a PC in the Belcore standards.

The device presumes possible changes of the refractive index value of the OF core performed by the operator.

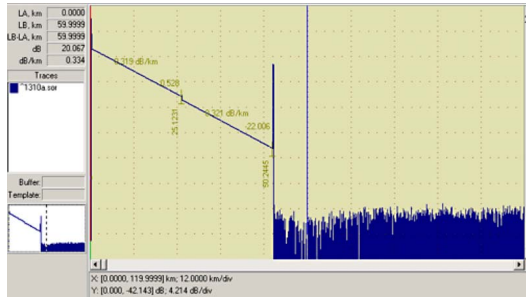
It also presumes changes of the information type, highlighted on the display.

When coupled with a PC, the OFL-5 operates a reflectometer.

The software allows for the trace of the link under testing on the PC display and for defining all the needed specifications of the fiber optic link.

The OFL-5 provides:

- quick and precise parameter analysis of the event of a fiber optic link;
- automatic setting of all the measurement parameters for maximum accuracy;
- storage of 128 traces;
- operation as a reflectometer.



### Specifications

Wavelength, nm	1550±20
Maximum distance range, km	180
Dynamic range, dB	28
Event dead zone, m	20
Attenuation dead zone, m	40
Distance uncertainty:	
- locator mode, m	±30
- reflectometer mode, m	±(1+sampling resolution+5×10 <sup>-5</sup> ×L)
Sampling resolution, m	4,8
Setting of Refractive Index	1.0000...1.9999
Events Location Criteria:	
- reflectance (dB)	from -64 to -43 depending on a distance
- event lose (dB)	>2
- threshold of fiber end (dB)	>5
Maximum number of events	32
Measurement time	not more than 3 minutes
Continuous operation from the rechargeable built-in batteries	not less than 3 hours
Power Supply	rechargeable batteries 4xAAA/~220V
Dimensions, mm	226×108×35
Weight, kg	not more than 1.0