

## OT-2-3 OPTICAL TESTER



The OT-2-3 is designed for measurement of optical power and attenuation in optical fibers and fiber optical components with high accuracy.

It can be used as a standard instrument for calibration of optical testers, power meters and laser sources.

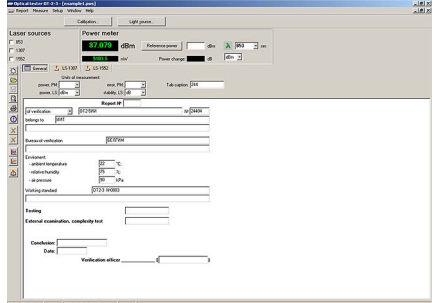
The OT-2-3 has a power meter as a head, three high stability laser sources and a built-in attenuator.

Laser power of the LD is regulated by laser current, which can be changed by the PC commands.

A 1 mm-InGaAs photodiode is used for optical power measurement.

The needed range and measurement accuracy are provided by the automatic switch of the optical receiver gain.

The OT-2-3 control and data processing are provided by a PC under Windows 95/98/NT.



### Specifications

Laser source				
Wavelength, nm	850±5		1310±5, 1550±5	
Power, dBm	2		3	
Stability, dB:				
	- 15 min	0.005		
	- 1 h	0.02		
Power meter				
Power range, dBm	+3...-70		+3...-80	
Uncertainty, %	4 (+3...-70) dBm	3 (+3...-60) dBm	4 (+3...-80) dBm	3 (+3...-70) dBm
Linearity, %	1.2 (+3...-70) dBm	0.8 (+3...-60) dBm	1.2 (+3...-80) dBm	0.8 (+3...-70) dBm
Uncertainty in the spectral range 780...1630 nm, %	5			
Resolution, dB	0.001			
Built-in attenuator range, dB	0...40			
Power Supply, V	~220			
Dimensions, mm	293×255×60			
Weight, kg	3			