

## OT-2-6 OPTICAL TESTER



The universal OT-2-6 Optical Tester refers to a new generation of digital optical test equipment for measurement of optical power and attenuation in fiber optic communication links and components.

The OT-2-6 consists of a laser source and a power meter in a small-sized case. It allows measuring a number of optical parameters by one instrument.

The instrument has a wide set of service functions, such as:

- storage of measurement results in a non-volatile memory with a time and date stamp of measurement;
- power meter operating control by a PC;
- reading and viewing of measurement data on a PC;
- calendar and real time clock;
- LCD contrast adjustment;

- low battery indicator;
- auto turning-off.

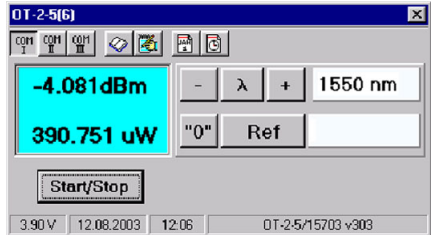
The OT-2-6 Optical Tester provides optical power measurements in the wavelength ranges of 850, 1310 and 1550 nm.

For higher accuracy the wavelength of the measured optical power can be adjusted near the central wavelength over the range of  $\pm 40$  nm with a step of 10 nm.

The laser source can operate a continuous mode and a pulsed mode with a modulation frequency of 2 kHz.

The instrument has an intuitive and friendly interface, a convenient keyboard and is protected by a compact, strong and appropriate IP-65 case.

The OT-2-6 Optical Tester is an ideal instrument for measurements in field conditions.



### Specifications

Laser source					
Fiber type	MM			SM	
Wavelength, nm	850 $\pm$ 30	1310 $\pm$ 30	1310 $\pm$ 30	1550 $\pm$ 30	1310 $\pm$ 30/1550 $\pm$ 30
Power, dBm	>-2	>-2	>-4	>-4	>-5
Stability (15 min), dB	$\pm$ 0.05				
Power meter					
Photodiode	InGaAs, 1mm				
Wavelength, nm	850		1310, 1550		
Power range, dBm	+3...-60		+3...-65		
Uncertainty, dB	0.33		0.22		
Linearity, dB	0.17		0.11		
Resolution, dBm	0.01				
Dimensions, mm	173 $\times$ 85 $\times$ 36				
Weight, kg	0.4				
Power Supply	rechargeable batteries 3xAAA/~220V				

Certificates of Belarus, Russia, Ukraine, Kazakhstan

