



## 650nm LASER DIODE MODULES

These laser diode modules are 650 (+/-10) nm laser-diode modules with single-mode fiber pigtails. These modules are optimal light sources for red locators.

### Ordering information

LDI FP - 650 - 4P - H - SM - FC/UPC

#### Connector type:

FC/UPC, SC/UPC, N – without connector

Standard length of a fiber - 0.5 m

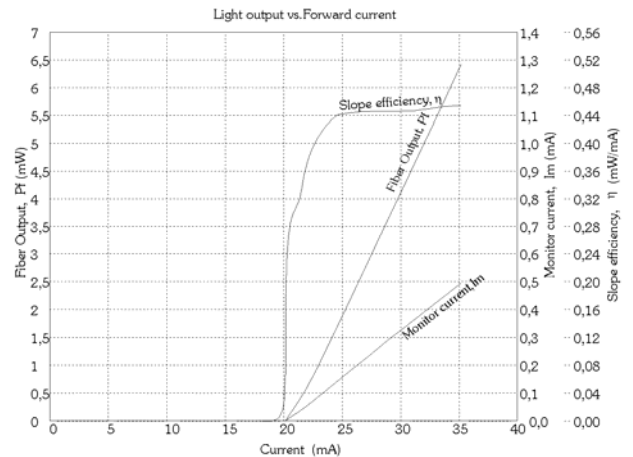
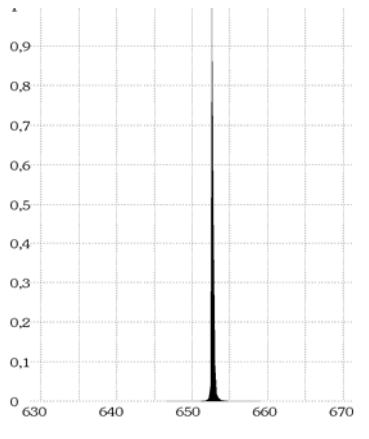


### Electrical / optical characteristics (SM, T=25°C)

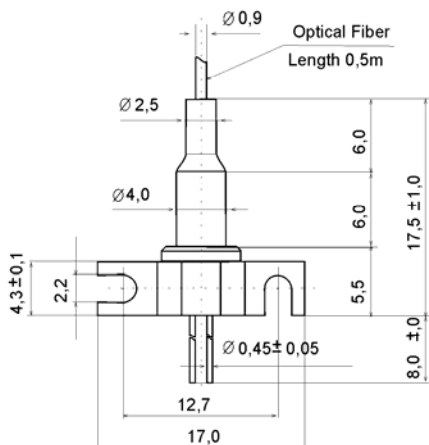
Output power (CW)	4	mW
Threshold current	<20	mA
Operating current	<30	mA
Spectral bandwidth (-3dB)	<2	nm
LD operating voltage	<2.5	V
Rise and fall times	<0.5	ns
Current monitor photodiode	>0.1	mA

### Absolute maximum ratings

LD reverse voltage	2 V
PD reverse voltage	30 V
Operating case temperature	- 20 ÷ + 50°C
Storage temperature	- 30 ÷ + 60°C



### PACKAGE DIMENSIONS (UNIT:mm)



### PIN Assignment (Bottom View)

